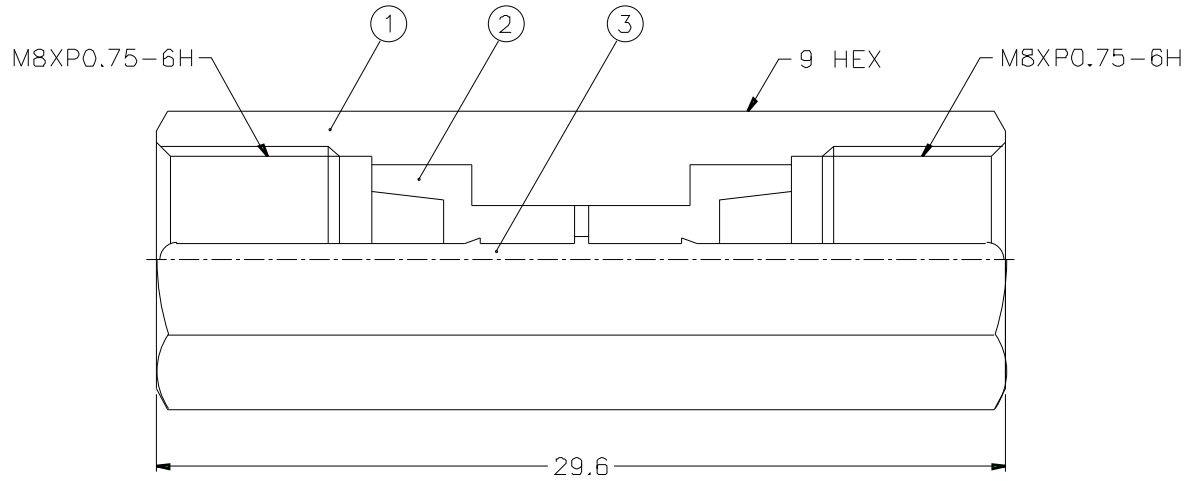


1 2 3 4 5 6 7 8

REVISIONS		
ISS	ZONE	DESCRIPTION\PER REQUEST\DATE



NOTES: FINISH (PLATING THICKNESS IN MICRO-INCHES)  
 1. BRASS PER QQ-B-626  
 2. NICKEL PL. 100 MIN. THICK OVER COPPER STRIKE  
 3. SILVER PL. 200 MIN. THICK OVER COPPER STRIKE  
 4. TEFLON MIL-P-19468

DIMENSIONS ARE IN MILLIMETERS			
UNLESS OTHERWISE SPECIFIED TOLERANCES			
0.5-6	=	±0.2	
6-30	=	±0.4	
30-120	=	±0.6	
120-315	=	±1	
315-1000	=	±1.6	
1000-2000	=	±2.4	

PART NO. FME2071A1-NTS-50	
APPROVED	DATE 10-11-01'
CHECKED	DATE 10-11-01'
DRAWN	DATE 10-11-01'

<b>Amphenol</b>	
TITLE FME MALE-MALE ADAPTOR	
DRAWING NO. KJ-FME2071A1-NTS-50	
ITEM NO.	

3	CONTACT PIN	NOTE 1	NOTE 3	1	FME2071A1-3
2	INSULATOR	NOTE 4	NATURAL	2	FME2071A1-2T-50-C
1	BODY	NOTE 1	NOTE 2	1	FME2071A1-1
NO.	DESCRIPTION	MATERIAL	FINISH	Q'TY	DRAWING NO.

SCALE	4/1	ISSUE	A
-------	-----	-------	---

FILE NO.	
----------	--

1 2 3 4 5 6 7 8

F

E

D

C

B

A

F

E

D

C

B

A